

## HARROW & HILLINGDON GEOLOGICAL SOCIETY

### FIELD TRIPS 2024

6 April (Sat). **Hertford**. A walk and museum visit, followed by another walk in the town after lunch. The morning walk includes the Castle, which features Herts. Puddingstone in the curtain walls, and three boulders are to be found in the grounds – of sarsen, puddingstone and granite. The museum includes an exhibit on local geology. After lunch, another walk will include a look at prominent old buildings in the town and their materials.



Hertford Museum

Photo © [Chris Reynolds \(cc-by-sa/2.0\)](#)



Old Verger's House

Photo © [Jim Osley \(cc-by-sa/2.0\)](#)



Hertford Castle

Photo © [Julian Paren \(cc-by-sa/2.0\)](#)

18 May (Sat). **Little Heath & Great Gaddesden (Herts)**. Joint with Hertfordshire Geological Society. Little Heath Pit is near Berkhamsted and exposes the Plio-Pleistocene Red Crag Formation overlain by Pleistocene (Anglian) glacial sands and gravels. We will spend the morning here, led by Clive Maton (HGS), who studied this pit with the late John Catt, and will talk about its geology, history and geoconservation. The afternoon will be at Great Gaddesden, firstly looking at the puddingstones in the churchyard, also led by Clive, followed by a visit to the water meadows to view the periglacial topography, led by Margaret Selby of HGS.



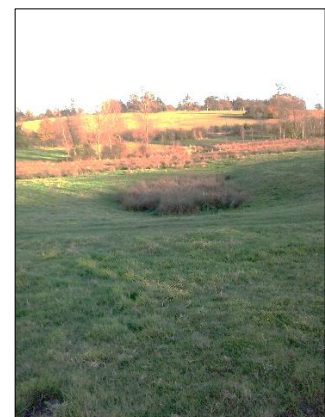
Little Heath Pit after conservation

Photo: *Clive Maton*



Puddingstone at Great Gaddesden Church

Photo: *Stonesearcher (Flickr) uploaded to megalithic.co.uk*



Water meadows at Great Gaddesden

Photo: *Margaret Selby*

23-26 June (Sun-Wed). **Black Country Geopark**. The trip begins with a visit to the [Lapworth Museum of Geology](#), on the University of Birmingham Campus. The museum is open between 12.00-17.00 and holds the finest and most extensive collections of fossils, minerals and rocks in the Midlands. Dating back to 1880, it is one of the oldest specialist geological museums in the UK. It recently underwent a £2.7m redevelopment. The 24<sup>th</sup> or 25<sup>th</sup> will be led by Graham Worton, Keeper of Geology at Dudley Council, Black Country UNESCO Geopark co-ordinator at Dudley Museum and Art Gallery and President of the Black Country Geological Society. Accommodation is being sought in Dudley or nearby towns.



Example localities in the Black Country



Doulton's Claypit, Saltwells

*All photos: Allan Wheeler*



Wren's Nest – Silurian limestone



Barrow Hill - dolerite

September (date TBA). **Harefield Great Pit SSSI geoconservation.** A date is to be arranged, following on from work done on 19 March 2024.



September (date TBA). **Dorset.** Two or three nights in a location suitable for visits to the Jurassic Coast and elsewhere in Dorset. Localities are being researched.

**Other dates to be arranged**

**Second HS2 site visit to the Chiltern Tunnel East Portals and the Colne Valley Viaduct.** This (second) visit was postponed in October 2023 due to bad weather, and then tours were suspended for the winter. Arrangements for a new date are being made with [Align JV](#) (the Colne Valley Viaduct and the Chiltern Tunnels joint venture contractor). There are **six** remaining places (out of 24) available for this visit. The 2-hour tour starts and ends at the Visitor Centre (exhibition, refreshments and toilets) with minibus travel around the site.

A further visit is being investigated to West Ruislip Northolt Tunnels portals and/or the Old Oak Common station site (contractor Skanska Costain Strabag JV - [SCS JV](#)).

**Caesar's Camp (Hale Plateau)** north of Farnham, Surrey, the highest point **within** the London Basin at 181m and a superb viewpoint. For this reason, fine weather and excellent visibility is needed for a visit, which involves ~90m (ascent) of uphill walking, though gradients are mainly moderate. The hill is capped with ~1 million-year-old Caesar's Camp Gravel which rests on the Camberley Sand Formation, the youngest bedrock in the London Basin, belonging to the Eocene Bracklesham Group which rests on the London Clay (Thames Group) here and there west of London. Older formations in the immediate area are the Windlesham and Bagshot Formations.



Photos: Thames Basin Heaths Partnership

View from Caesar's Camp

Caesar's Camp Gravel

**Harrow Weald Common Geotrail** in the Stanmore Gravel Formation, devised by Diana Clements assisted by AW. This is the subject of a new chapter in the second (2023) edition of the Geologists' Association guide *The Geology of London*, by the same author. The Stanmore Gravel caps parts of the South Hertfordshire Plateau and some other hills in the London Basin, and although for now it has been assigned to the Plio-Pleistocene Crag Group (see 'Suffolk' below) by the British Geological Survey, its origin is uncertain and is the subject of a HHGS research project. Attendance by

Spring 2025. **Suffolk.** This trip follows on from that of May 2023, and will include further visits to sites in the shallow marine Crag deposits of Pliocene and early Pleistocene age which outcrop in eastern Suffolk and Norfolk. These fossiliferous sandy deposits were laid down in the southern North Sea between c. 4 and 1.5 Ma, during fluctuating climatic conditions. It will include visits to Eocene sections and Pleistocene glacial and interglacial deposits. The trip will be based in the Ipswich area for further NE. Further details of potential sites [here](#) and [here](#).

**Updates to this programme will be issued from time to time and additional visits may be added.**

**Please Note:**

*Members attending field trips are reminded that they accept full personal responsibility for their own safety, and that of their personal possessions, whilst on the field trip; also, that they are fit to undertake the trip. (If you have a mobility problem, cardiovascular disease, or other serious infirmity you must declare it before joining the field trip; however as most of our field trips are taken at a gentle pace, this is unlikely to stop you participating. Please consult one of the committee if you are at all concerned.)*

*There will be a risk assessment carried out for each visit, with a safety briefing on site.*

*A small attendance fee (to cover administration costs/leaders' expenses) is charged at £1 to members and £2 for non-members (for day membership to provide insurance cover). Joining instructions and further information will be provided nearer the date.*